

12 % (metabolite Feo) to 75 ± 8.8 % (Dia). Over 90% recoveries were obtained from the majority of the pesticides and their metabolites found. These results were almost comparable to the reported values [9,14,17]. The limit of detection (LOD) ranged from 0.3 ng/L (Edi, Met-E, Pyt, and metabolite Feo) to 10 ng/L (Fip and metabolite Fes). These values are sufficient to discuss the analytical results.

The 31 pesticides of interest in the present study included 12 fungicides, 12 insecticides, and 7 metabolites. Among these 31 pesticides, 23 pesticides were detected. They were 11 fungicides except Flu, 10 insecticides except Fet and Teb, and 2 metabolites.

Among the neonicotinoid insecticides, Din was found in the highest level. This may be due to the aerial spray of Din with an unmanned helicopter during August [14]. The maximum levels of the other 3 neonicotinoid insecticides (Clo, Imi, and Thi) were significantly lower than that of Din (approximately 2.5% of Din). One of the non-neonicotinoid insecticides, Fip, was recovered at a higher level than those three neonicotinoid insecticides (Clo, Imi, and Thi), whereas its max value was only 8.3% of that of Din.

The metabolite of Dia (max, 4.5 ng/L), Diao, was not detected. On the other hand, Fet was not detected but its metabolite Feso (max, 2.1 ng/L) was detected. Mal was detected in 6 samples and detected together with Malo in 2 samples (from April 4 and July 4). Either Mal or Malo was found in the rest of the samples.

Figure 2 shows concentrations of Mal/Malo found in the samples collected on the different dates. Both Mal and Malo were found in the samples collected on April 4 and July 4. Only Mal was found in the samples collected on May 9, 23, June 6, and September 26. On the other hand, only Malo was detected in the samples collected on August 15, 20, and September 12, suggesting that sprayed Mal might have degraded into Malo and then blew into the river. Amounts of a metabolite higher than those of its original pesticide have been reported. For example, arbofuran (Feso) was found in greater quantities than carbosulfan in the Sakura River, Ibaraki Prefecture [5]. Also, the same phenomenon was reported in the case of isofenpos oxon and tolchlofos methyl oxon in the Shinano River [9].

The levels of pesticides detected ranged from 0.5 ng/L (Pyr) to 490 ng/L (Met) in the present study (Table 1). Among the pesticides regulated by the ministries in Japan [18,19,20], no pesticides studied in the present study exceeded their standard levels, suggesting that there should not be adverse effects on human health caused by these residues. However,

Dia and Feb exceeded the predicted no-effect concentration (PNEC) set by the Japan Ministry of Environment [21], suggesting that they could have adverse effects on some aquatic animals.

The maximum levels of Azo, Fur, Iso, Pyr, and Din were equal to the those found in Kotsuki River, Kagoshima Prefecture, which is located in the southernmost part of Kyushu [22]. The level of Met found in the present study was approximately 10 times that found in Tsurumi River, Yokohama City [23]. On the other hand, the other pesticides found in the present study were within the low and medium levels found in the same river [23,24]. The levels of three neonicotinoid insecticides (Clo, Imi, and Thi) were 4 to 400 folds less than those found in a river near Sidney, Australia [25].

The levels of other pesticides found in the present study were compared with those of previously reported cases. Clo and Thi were found at the same level as in a river in Osaka Prefecture, Japan [17]. Dia was found at the same level as in surface water in the US (Presque Isle, Maine, Parma, Idaho and Hancock, Wisconsin) [26]. Feb, Imi, and Met were found at the same level as in a river in Yokohama City [23,27]. Tri was found at lower levels than in the Shinkawa River, Niigata Prefecture [7]. Ipr was found at lower levels than in Sakura River, Ibaragi Prefecture (max, 853 ng/L) [6] and in Tsurumi River, Yokohama City (max, 2,400 ng/L) [24]. Mal was found at lower levels than in Kotsuki River, Kagoshima Prefecture (max, 297 ng/L) [22]; Tsurumi River (max, 70 ng/L) [23] and (max, 1,300 ng/L) [24].

Figure 3 shows the concentration variation of 4 neonicotinoid insecticides (Clo, Din, Imi, and Thi) and Fip. Din and Imi were detected during early April and late September. The concentration of Din (410 ng/L) was the greatest in the sample obtained on August 15. The maximum concentration was lower than reported results of 10,000 ng/L in the

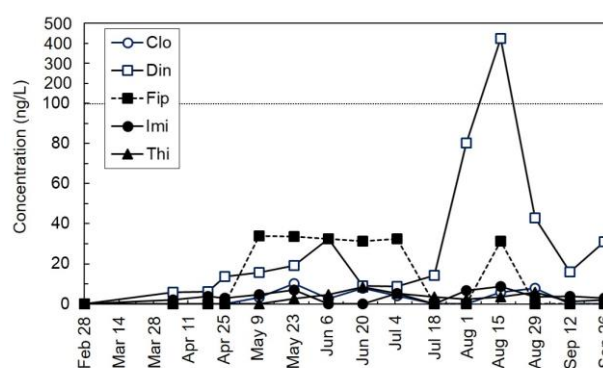


Fig. 3: Concentration fluctuations of neonicotinoid insecticides (Clo, Din, Imi, and Thi) and Fip

Washinoki-Odori River, Niigata, Prefecture [14] and 1900 ng/L in the Sabigawa River, Osaka Prefecture [29]. The maximum concentration of Imi (9 ng/L) was lower than that of 500 ng/L in the Kanzaki River, Osaka Prefecture [29] and 25.9 ng/L in the Iowa River [30]. Clo was detected during early May and late August and its concentration (10 ng/L) was the greatest on May 15. The value was lower than the maximum concentration of 350 ng/L in the Taisho River, Osaka Prefecture [29], and was comparable to 13.3 ng/L in the Iowa River [30]. Thi was detected during early May and late September and its concentration (8 ng/L) was the highest on August 15, which was comparable to 8.23 ng/L in the Iowa River [30].

Fip was found in relatively high levels during early May and early July and then not detected thereafter until after mid-August. The maximum concentration of 34 ng/L was twice the reported values of 14 ng/L in Yamato River, Osaka Prefecture [29] and 40 times that (0.92 ng/L) in the River Elbe [28].

Figure 4 shows the concentration variation of 6 pesticides. These are pesticides that have been considered ones likely to cause some adverse effects on the ecosystem. They were detected at relatively high levels in the present study. Fungicides Iso, Met-E, Pyr, and Tri were detected during early April and late September. Their maximum levels were 5.8 ng/L for Iso and 190 ng/L for Tri, respectively, in mid-August; 250 ng/L for Met-E in mid-July; and 64 ng/L for Pyr in mid-June. The peak time when insecticide Met was detected was in May and the peak for Phe was in early May, early Jun, and mid-July.

Various pesticides are applied in paddy fields, which comprises most of the cultivated field area of the river basin, during May and August. Most of Din

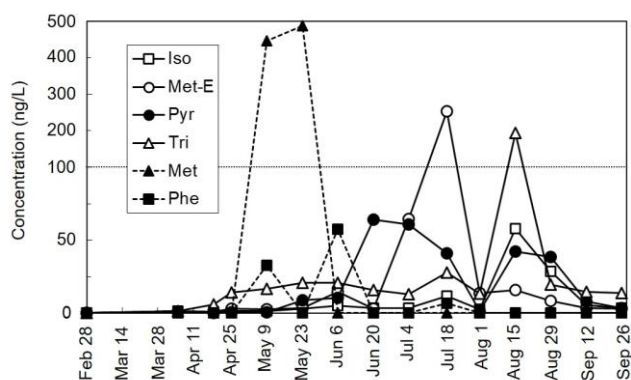


Fig. 4: Concentration fluctuations of fungicides (Iso, Met-E, Pyr, and Tri) and insecticides (Met and Phe)

was sprayed by unmanned helicopter early in August on the paddy fields in the basin of the river, which caused the increase of Din concentration in August.

The maximum concentrations of the pesticides found were Mal in April; Tia, Clo, Fip, and Met in May; Dia, phe, and Thi in Jun; and Met-E, Met-Z, Pyr, and Feb in July. In August, maximum amounts of Azo, Edi, Fer, Ipr, Iso, Tri, Din, and Imi were detected. Among them, the concentrations of Ipr and Imi increased in May and Jun. Edi, Fer, Fur, Feb, and Met were detected only during a relatively short period of time, whereas Ipr, Iso, Met-E, Pyr, Tri, Dia, Din, Imi, and Thi were found over a long period from April to September. Regarding neonicotinoids, their concentration fluctuations were different from those in rivers in Osaka Prefecture [17]. Fip applied to rice seeds was reported as transferring to paddy water after seedling transplanting to paddy field [31]. The concentration of Fip seemed to depend on the applied time and drainage status of water from paddy field after application. The maximum levels of metabolites Malo and Feso were found in July and in August, respectively.

The pesticide loading is more suitable than the pesticide concentration to evaluate the pesticide fluctuation in a river and the runoff from paddy fields because the concentration is affected by the flow of the river water [9,14,32]. Figure 5 shows the monthly loading of total pesticides of interest in the present study. The values were calculated according to a previously reported method [9]. The values are two weeks' worth of river flow rate times the concentration of each pesticide. The total pesticide loading was the highest in May (16 kg) when most applications of insecticides other than neonicotinoids were conducted. The highest total loadings of fungicides, neonicotinoids and the other insecticides and metabolites during April and September were 5.5

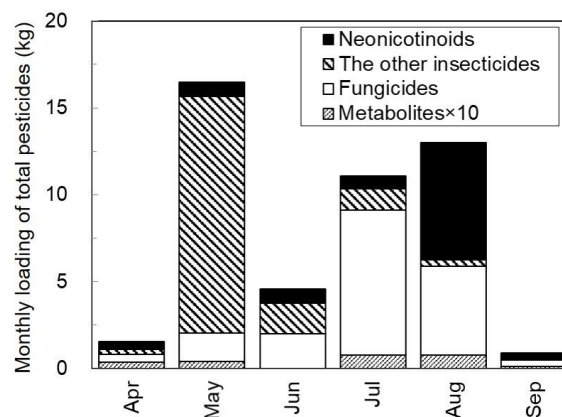


Fig. 5: Monthly total loading fluctuations of fungicides insecticides and metabolites

kg (Met-E), 8.2 kg (Din), 12.2 kg (Met) and 0.2 kg (Feso), respectively. The monthly loading of total pesticides exhibited unique variations.

The maximum value of fungicides was obtained in July (8.4 kg), followed by August (5.1 kg). The ratios of fungicides in July and August were 47% and 28% of the total fungicide loading, respectively. The major fungicides were Met-E of 4.7 kg and Pyr of 2.0 kg in July, and Tri of 2.4 kg in August.

Insecticides were detected in the greatest amounts in May, followed by August. The level of neonicotinoids was the highest in August, when it was 95% of the total loading. As mentioned above, 87% of the total loading neonicotinoids was Din, which was sprayed over the paddies by an unmanned helicopter in August [14]. The total loadings of neonicotinoid pesticides were 0.56 kg from Clo, 8.2 kg from Din, 0.68 kg from Imi, and 0.54 kg from Thi. In addition, a total loading of Fip was 2.8 kg, which was the next highest level to Din. All pesticides flowed down from spring to fall, indicating that they had been used for relatively long time-period.

The total loading of metabolites was the greatest in July and August. In the case of insecticides, they were the highest in May and reduced in Jun and July, whereas they increased in August. The pesticides found in the highest amounts during May and Jun were Tia (fungicide), Clo, Fip, Mal, Met, Phe, and Thi (insecticides). The other pesticides were found in the greatest amounts during July and August. Mal flowed into the river mainly during April and July and its value was the highest in Jun. On the other hand, its metabolite Malo flowed into the river in April and during July and September and was found in the highest in July. This may be due to degradation of Mal to Malo over the time progress.

Among the pesticides flowing into the Nodai River, the ones with known runoff amount of its basin were calculated their runoff ratio (%). The runoff ratio is a ratio of total loading of a pesticide in runoff water amount [14,32,33]. In the case of Met, total loading value of Met-E and Met-Z was used. The results indicated that the runoff ratios of pesticides ranged from 0.28% (Dia) to 12% (Met-E). In the case of fungicides, the runoff ratio was 2.1% for Azo, 0.48% for Fer, 12% for Met-E 1.3% for Pyr, and 7.6% for Tri. In the case of insecticides, it was 0.28% for Dia, 4.8% for Fip, 6.1% for Met, and 2.2% for Phe. The runoff ratios of neonicotinoids were 2.2% for Clo, 10% for Din, 0.78% for Imi, and 6.3% for Thi. The ratio of Din was a quarter of 38% in the Washinoki-Odori River, Niigata Prefecture [14]. Since there have been few reports on runoff ratios in rivers for the other neonicotinoids, the values in this study are important for further investigation on their

behaviors in river. In addition, the results suggest that drainage improvement would be recommended to decrease runoff of applied pesticides.

It was expected that the higher the water solubility or lower the n-octanol/water distribution coefficient ($\log P$) the higher the runoff amount would be. However, no appreciable relationship between pesticide runoff amount and water solubility or $\log P$ was observed. The runoff ratios of Dia and Imi, which were sprayed over farmland, were relatively lower than those of pesticides sprayed over paddy fields. This may be due to fact that the pesticides sprayed over paddy fields readily flowed into the river when paddy water was drained into it. Runoff amounts of pesticides varied among different reports, suggesting that the runoff values are not only depended on the physical natures of specific pesticides but also on various external factors, such as spraying areas, methods, and the weather. In the case of fungicide Tri, the runoff ratio value (4.5%) of Nodai River was within the range reported (0.06 – 9.4%) from Shinkawa River, Niigata Prefecture [33]. The runoff ratio of Din (10%) from Nodai River was consistent with the one reported in the Washinoki-Odori River, Niigata Prefecture [14]. These runoff events appeared to be caused by the drainage of the paddy water in the river basin. The pesticide concentration remained at high level in paddy waters for one or two weeks after application [11,14]. Therefore, the results suggest that the paddy water should keep in the paddy field for the period.

4 Conclusion

The concentration fluctuations, the loadings and the runoff ratios of commonly used fungicides and insecticides including neonicotinoid insecticides were investigated in a small river (Noshiro River) flowing through rice paddy fields in Niigata Prefecture, Japan. The residues of the investigated pesticides found ranged from 0.8 ng/L of Malo to 490 ng/L of Met. Din was found in the highest level (410 ng/L at maxim) among the four investigated neonicotinoid insecticides. This may be due to the aerial spray of Din with an unmanned helicopter during August. The maximum levels of the other 3 neonicotinoid insecticides and Fip were significantly lower than that of Din. No pesticides studied in the present study exceeded the standard levels in environmental and drinking water set by the government of Japan. The highest total loadings of fungicides, neonicotinoids and the other insecticides and metabolites during April and September were 5.5 kg (Met-E), 8.2 kg (Din), 12.2 kg (Met) and 0.2 kg

(Feso), respectively. The maximum loadings of total pesticides were obtained in July for fungicides, August for neonicotinoids and May for the other insecticides. The runoff ratios of some pesticides from paddy fields ranged from 0.28% of Dia to 12% of Met-E, and the ratios of neonicotinoids were 2.2% for Clo, 10% for Din, 0.78% for Imi, and 6.3% for Thi.

The results of the present study provided the data under certain field conditions in Japan, suggesting that pesticide concentrations in small rivers located in agricultural areas are influenced by the pesticides used in its basin. Moreover, in this study, the concentrations of some pesticides exceeded the PNEC, and this is a concern for potential ecological impacts. The analysis approach used in the present study is an effectual measure for the fluctuations of pesticide residues in river. However, more frequent samplings and determinations will be required for the residue fluctuations. Further studies are needed to evaluate the fluctuations in concentration and loading of neonicotinoid insecticides under different field conditions in the Nodai River and another small rivers.

References:

- [1] European Commission. *EU Pesticides Database*, <https://ec.europa.eu/food/plant/pesticides/eu-pesticides-database/public/?event=activesubstance.selection&language=EN>.
- [2] Jeschke, P., Nauen, R., Schindler, M., Elbert, A., Overview of the status and global strategy for neonicotinoids, *J. Agric. Food Chem.*, 59, 2011, 2897–2908.
- [3] Van der Sluijs, J. P., Simon-Delso, N., Dave, G., Maxim L, Bonmatin, J. M., Belzunces, L. P., Neonicotinoids, bee disorders and the sustainability of pollinator services, *Curr. Opin. Environ. Sustain.*, 5, 2013, 293–305.
- [4] European Union, Commission Implementing Regulation (EU), *Offi. J. Euro. Union.*, 56 (L 139), 2013, 12–26.
- [5] Japan Ministry of Environment, *Registration withholding standards for agricultural chemical*, <https://www.env.go.jp/water/sui-kaitei/kijun.html>.
- [6] Iwafune, T., Inao, K., Horio, T., Iwasaki, N., Yokoyama, A., Nagai, T., Behavior of paddy pesticides and major metabolites in the Sakura River, Ibaraki, Japan, *J. Pestic. Sci.*, 35, 2019, 114–123.
- [7] Tanabe, A., Kawata, K., Daily variation of pesticides in surface water of a small river flowing through paddy field area, *Bull. Environ. Contam. Toxicol.*, 82, 2009, 705–710.
- [8] Yamada, T., Yamada, K., Wada, N., Influence of dinotefuran and clothianidin on a bee colony, *Jpn. J. Clin. Ecol.*, 21, 2012, 10–23.
- [9] Tanabe, A., Mitobe, H., Kawata, K., Yasuhara, A., Shibamoto, T., Seasonal and spatial studies on pesticide residues in surface waters of the Shinano River in Japan, *J. Agric. Food Chem.*, 49, 2001, 3847–3852.
- [10] Maeda, T., Iwashita, M., Hori, T., Asada, T., Oikawa, K., Kawata, K., Variation of 4,5,6,7-tetrachlorophthalide in water after aerial application to rice cultivation area, *Bull. Environ. Contam. Toxicol.*, 80, 2008, 399–402.
- [11] Morohashi, M., Nagasawa, S., Enya, N., Suzuki, K., Kose, T., Kawata, K., Behavior of bromobutide in paddy water and soil after application, *Bull. Environ. Contam. Toxicol.*, 88, 2012, 521–525.
- [12] Morohashi, M., Nagasawa, S., Enya, N., Ohno, M., Suzuki, K., Kose, T., Kawata, K., Decrease of herbicide bromobutide and its debromo metabolite in paddy field soil during 24 weeks after application, *Bull. Environ. Contam. Toxicol.*, 89, 2012, 176–180.
- [13] Kubo, T., Ohno, M., Nagasawa, S., Kose, T., Kawata, K., Behavior of herbicide pyrazolynate and its hydrolysate in paddy fields after application, *Bull. Environ. Contam. Toxicol.*, 89, 2012, 985–989.
- [14] Yokoyama, S., Ito, M., Nagasawa, S., Morohashi, M., Ohno, M., Todate, Y., Kose, T., Kawata, K., Runoff and degradation of aerially applied dinotefuran in paddy fields and river, *Bull. Environ. Contam. Toxicol.*, 94, 2015, 796–800.
- [15] Pizzutti, I. R., Kok, A. de, Zanella, R., Adaime, M. B., Hiemstra, M., Wickert, C., Prestes, O. D., Method validation for the analysis of 169 pesticides in soya grain, without clean up, by liquid chromatography–tandem mass spectrometry using positive and negative electrospray ionization, *J. Chromatogr. A*, 1142, 2007, 123–136.
- [16] Serizawa, S., Hirai, I., Takamura, N., Shiraishi, H., *Aquatic organisms and their environments in irrigation ponds*, F-116, 64–67, Nation. Inst. Environ. Studies, Tsukuba, 2011.
- [17] Yamamoto, A., Terao, T., Hisatomi, H., Kawasaki, H., Arakawa, R., Evaluation of river pollution of neonicotinoids in Osaka City (Japan) by LC/MS with dopant-assisted photoionisation, *J. Environ. Monit.*, 14, 2012, 2189–2194.

- [18] Japan Ministry of Environment, *Guideline values for monitored substances in the environmental water*, <http://www.env.go.jp/en/water/wq/wp.pdf>.
- [19] Japan Ministry of Health, Labour and Welfare, *Target value for complementary items for drinking water*, <https://www.mhlw.go.jp/stf/seisakunitsuite/bunya/topics/bukyoku/kenkou/suido/kijun/kijunchi.html>.
- [20] Takahashi, M., Ibaraki, T., Ozawa, A., Takahashi, T., Hatamoto, N., Murayama, H., Annual behavior of pesticides in river waters in Niigata Prefecture, *J. Environ. Chem.*, 27, 2017, 183–192.
- [21] Japan Ministry of Environment, *Profiles of the Initial Environmental Risk Assessment of Chemicals, Vol.2*, <http://www.env.go.jp/chemi/report/h15-01/index.html>.
- [22] Yuda, T. Nagai, R., Sunose, T., Imaizumi, Y., Application of emission estimation model for pesticides of paddy fields to the Kotsuki River II, *Ann. Rep. Kagoshima Pref. Inst. Environ. Res. Pub. Health.*, 15, 2013, 88–94.
- [23] Sakai, M., Investigation of Pesticides in the Tsurumi River (April 2008-March 2009), *Ann. Rep. Yokohama Environ. Sci. Res. Inst.*, 34, 2010, 65-69.
- [24] Sakai, M., Investigation of Pesticides in the Tsurumi River (April 2009-March 2010), *Ann. Rep. Yokohama Environ. Sci. Res. Inst.*, 35, 2011, 41–46.
- [25] Sánchez-Bayo, F., Hyne, R. V., Detection and analysis of neonicotinoids in river waters – Development of a passive sampler for three commonly used insecticides, *Chemosphere*, 99, 2014, 143–151.
- [26] Reilly, T. J., Smalling, K. L., Orlando, J. L., Kuivila, K. M., Occurrence of boscalid and other selected fungicides in surface water and groundwater in three targeted use areas in the United States, *Chemosphere*, 89, 2012, 228–234.
- [27] Ninomiya, K., Inukai, M., Koichi, Y., Shimomura, K., Mizuo, H., Study on investigation of pesticides using by LC/MS at rivers and sea in Yokohama city, *Ann. Rep. Yokohama Environ. Sci. Res. Inst.*, 34, 2010, 61–64.
- [28] Michel, N., Freese, M., Brinkmann, M., Pohlmann, J.-D., Hollert, H., Kammann, U., Haarich, M., Theobald, N., Gerwinski, W., Rotard, W., Hanel, R., Fipronil and two of its transformation products in water and European eel from the river Elbe, *Sci. Total Environ.*, 568, 2016, 171–179.
- [29] Oyama, K., Yabuki, Y., Banno, A., Investigation of seasonal changes and ecological risk assessments of neonicotinoid pesticides in rivers in Osaka, Japan, *J. Jpn. Soc. Water Environ.*, 42, 2019, 277–284.
- [30] Klarich, K. L., Pflug, N. C., DeWald, E. M., Hladik, M. L., Kolpin, D. W., Cwiertny, D. M., LeFevre, Gr. H., Occurrence of neonicotinoid insecticides in finished drinking water and fate during drinking water treatment, *Environ. Sci. Technol. Lett.*, 4, 2017, 168–173.
- [31] Schlenk, D., Huggett, D. B., Allgood, J., Bennett, E., Rimoldi, J., Beeler, A. B., Block, D., Holder, A. W., Hovinga, R., Bedient, P., Toxicity of fipronil and its degradation products to *procambarus* sp.: field and laboratory studies, *Arch. Environ. Contam. Toxicol.*, 41, 2001, 325–332.
- [32] Shiota, N., Hori, T., Nissato, K., Asada, T., Oikawa, K., Kawata, K., Runoff of aerially applied phthalide from paddy fields, *Bull. Environ. Contam. Toxicol.*, 77, 2006, 508–515.
- [33] Mitobe, H., Ibaraki, T., Tanabe, A., Kawata, K., Sakai, M., Kifune, I., Variation of pesticides in a river flowing through paddy fields area, *J. Environ. Chem.*, 9, 1999, 311–320.